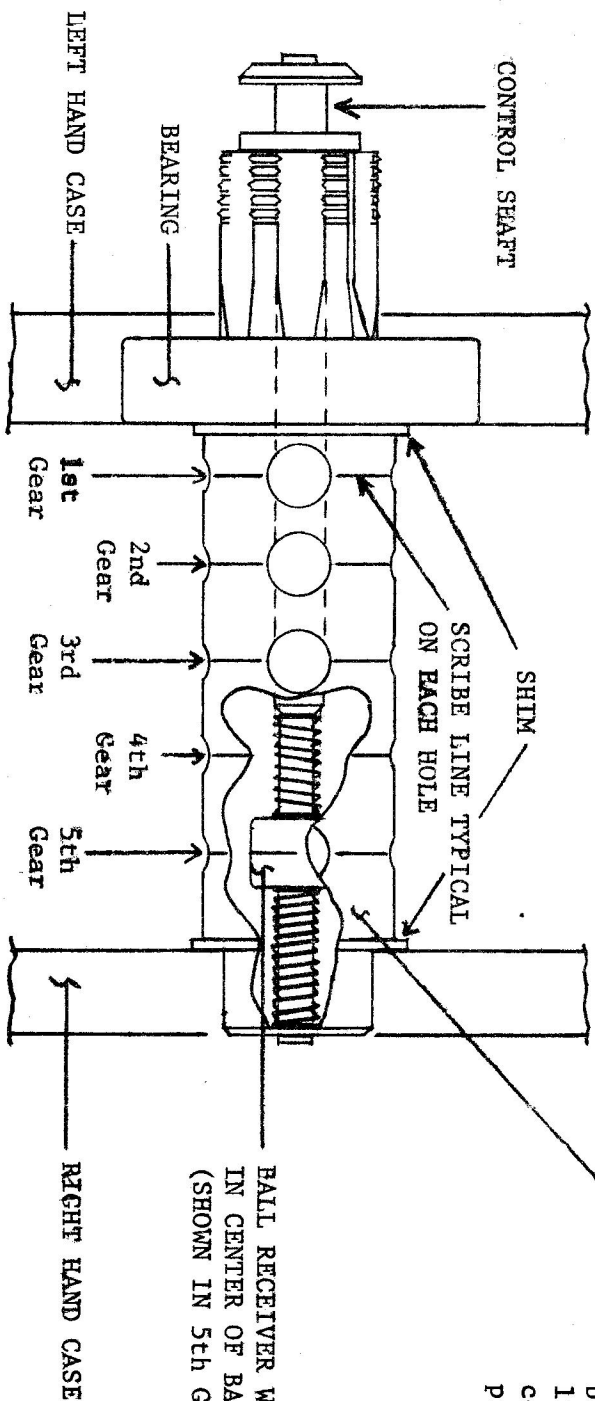


TOP VIEW OF COUNTERSHAFT
 (Setting in the Crankcase)



COUNTERSHAFT

NOTE: When the scribe line on the receiver ball will "line" up with the scribe lines in all gear positions (on the countershaft) the transmission is properly adjusted.

BALL RECEIVER WITH SCRIBE LINE
 IN CENTER OF BALL
 (SHOWN IN 5th GEAR POSITION)

RIGHT HAND CASE

LEFT HAND CASE

CONTROL SHAFT

BEARING

1st Gear

2nd Gear

3rd Gear

4th Gear

5th Gear

SHIM

SCRIBE LINE TYPICAL
 ON EACH HOLE

